



Sub Edit HD version 1.0  
User's Manual

*Under construction*

# Contents

1 Introduction.....	3
2 User Interface.....	4
2.1 Main screen.....	4
2.2 Subtitle editing window.....	6
2.3 Video fullscreen.....	8
2.3.1 HUD control.....	8
2.4 Server window.....	10
2.5 Additional windows.....	11
2.5.1 Move subtitles.....	11
2.5.2 Change fps.....	12
2.5.3 Subtitles settings.....	12
2.6 Application Preferences.....	14
2.7 Application help.....	15
3 Application usage.....	16
3.1 Creating new subtitles for movie.....	16
3.2 Adjusting existing subtitles for movie.....	16
3.3 Movie watching.....	16
4 Troubleshooting.....	17
5 Contact information.....	18

# 1 Introduction

Sub Edit HD is a subtitles editor and movie player. Using Sub Edit HD you can create new subtitle for your movie, translate any existing subtitle or adjust existing subtitle to your version of movie.

After creating or changing subtitle you can watch your movie on the fullscreen, on the primary or secondary screen.

Major functions of Sub Edit HD:

- opens subtitles in .srt, .sub and .txt formats (mDVD frame format, mplayer2 time format, tmp time format and srt format)
- saves subtitles in .srt, .sub and .txt formats (mDVD frame format, mplayer2 time format and srt format)
- supports converting between different code pages.
- allows to add new line, delete and edit existing lines of subtitles
- allows to shift subtitles in time, to perfect fit movie dialogues
- allows to change fps (frame per second) rate in imported subtitles
- built in SAMBA (SMB) client which allows you to download movies directly from any windows or mac computer
- iTunes sync allows to fast download movies to your iPad.

Supported File Format Extension

- movies: XVID/DIVX AVI, MKV, TS, WMV, RMVB, ASF, H264, M2TS etc.
- subtitles:
  - SubRip (srt) in .srt and .txt files
  - Micro DVD (mDVD) - frame-based format, looks like *{10}{100}Subtitle Line* in .sub and .txt files
  - MPlayer 2 (mpl2) - time-based format, looks like *[10][100]Subtitle Line* in .txt files
  - TMP Player (tmp) - time-based format, looks like *0:32:04:Subtitle Line* in .txt files (Sub Edit HD only reads this format).

Sub Edit HD uses some libraries of FFmpeg licensed under LGPL v2.1.

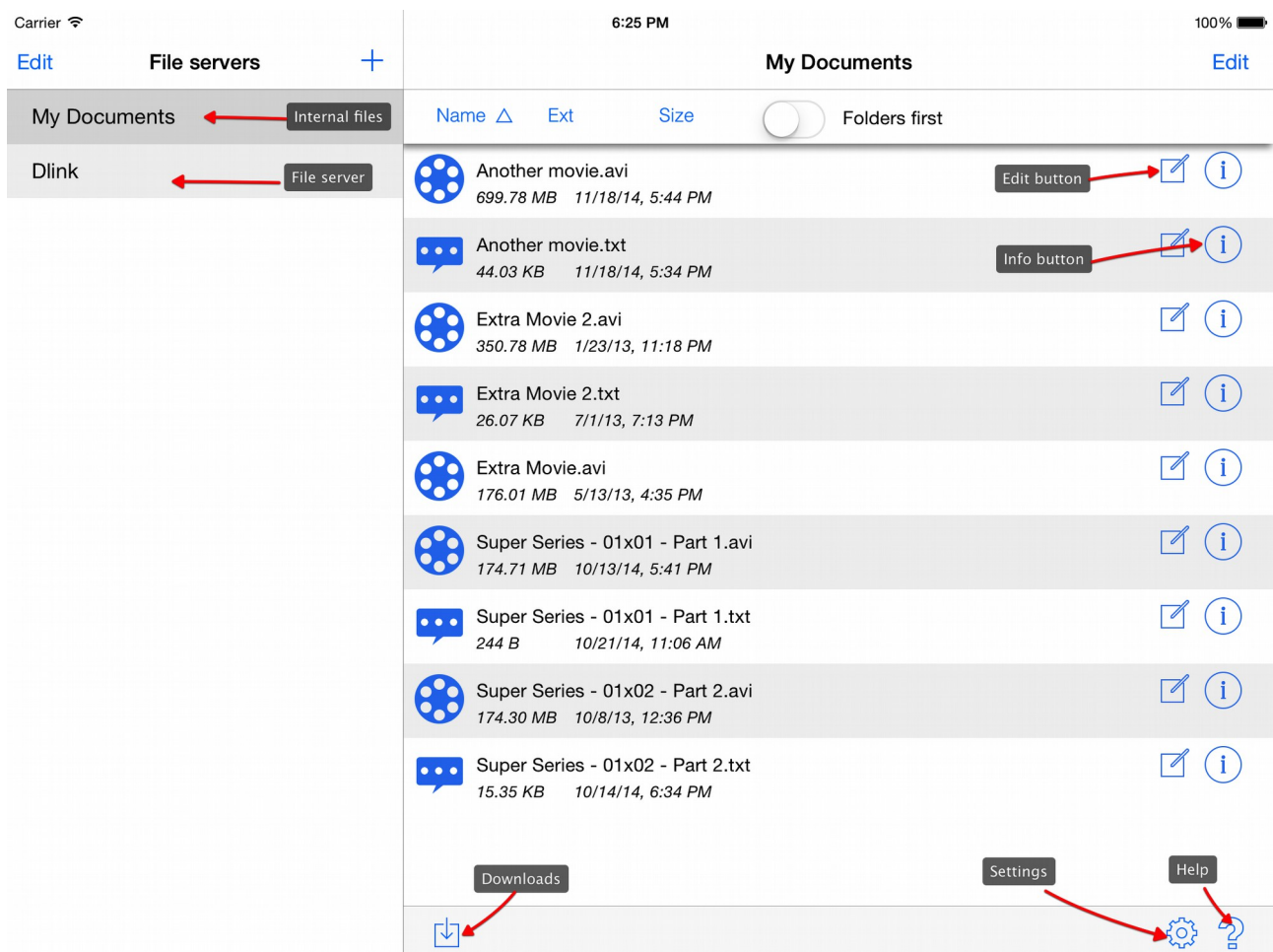
## 2 User Interface

This chapter describes all elements of the user interface in Sub Edit HD, and shows their functions, purposes and connections.

### 2.1 Main screen

Main screen of application is divided into two sections:

- left section contains list of file servers and buttons allowing edition of this list



- right section contains list of files in chosen server

In portrait mode left section is available after touching “File servers” button.

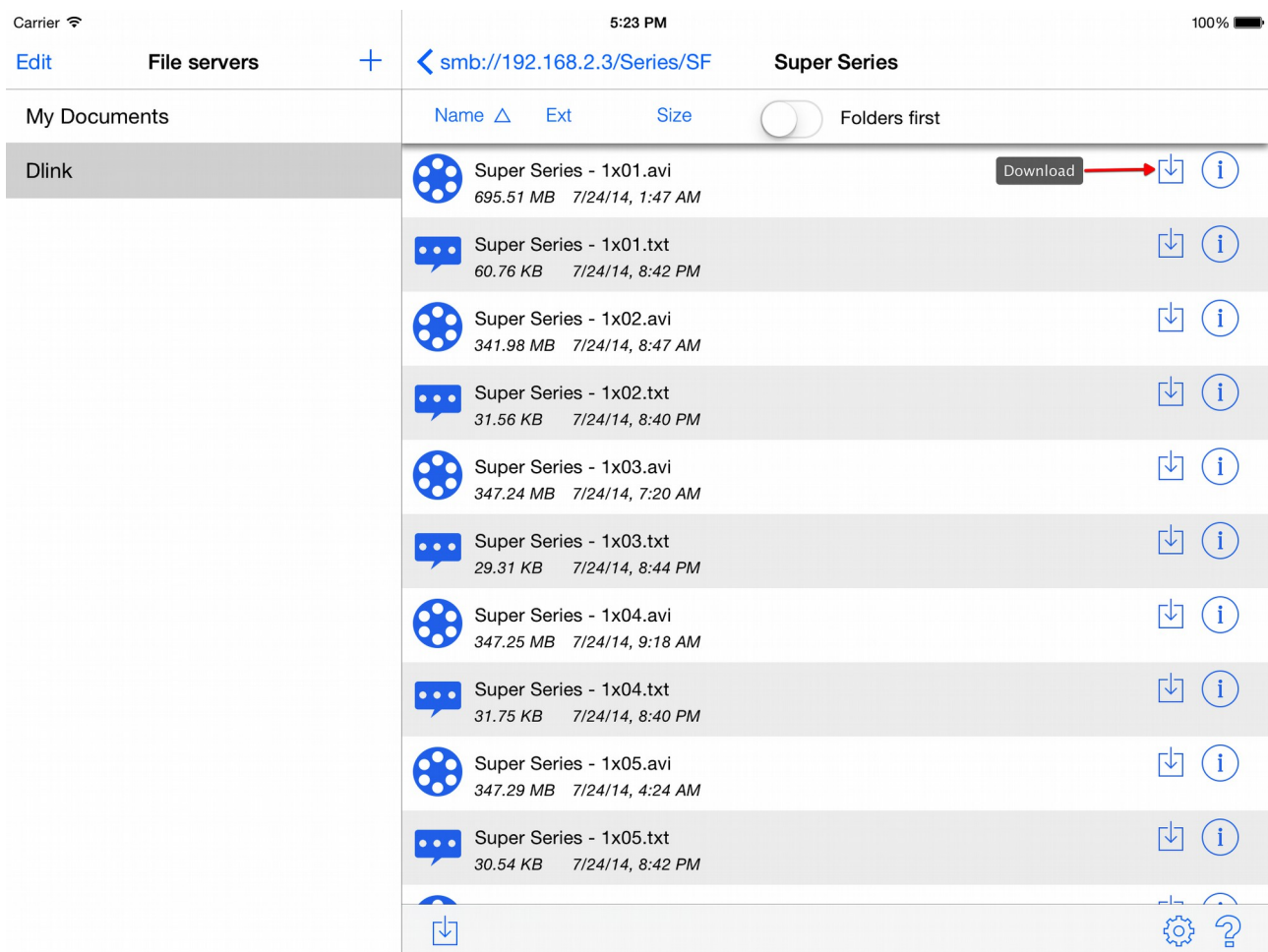
File servers list contains all servers added to application and special folder “My documents” where are stored local files.

You can add new server using + button. After tapping *Edit* button you can edit or delete any server (but you cannot edit or delete “My documents” folder).

Server window is described in chapter xxx

Right section contains files and directories from selected server. This window contains also few special sections:

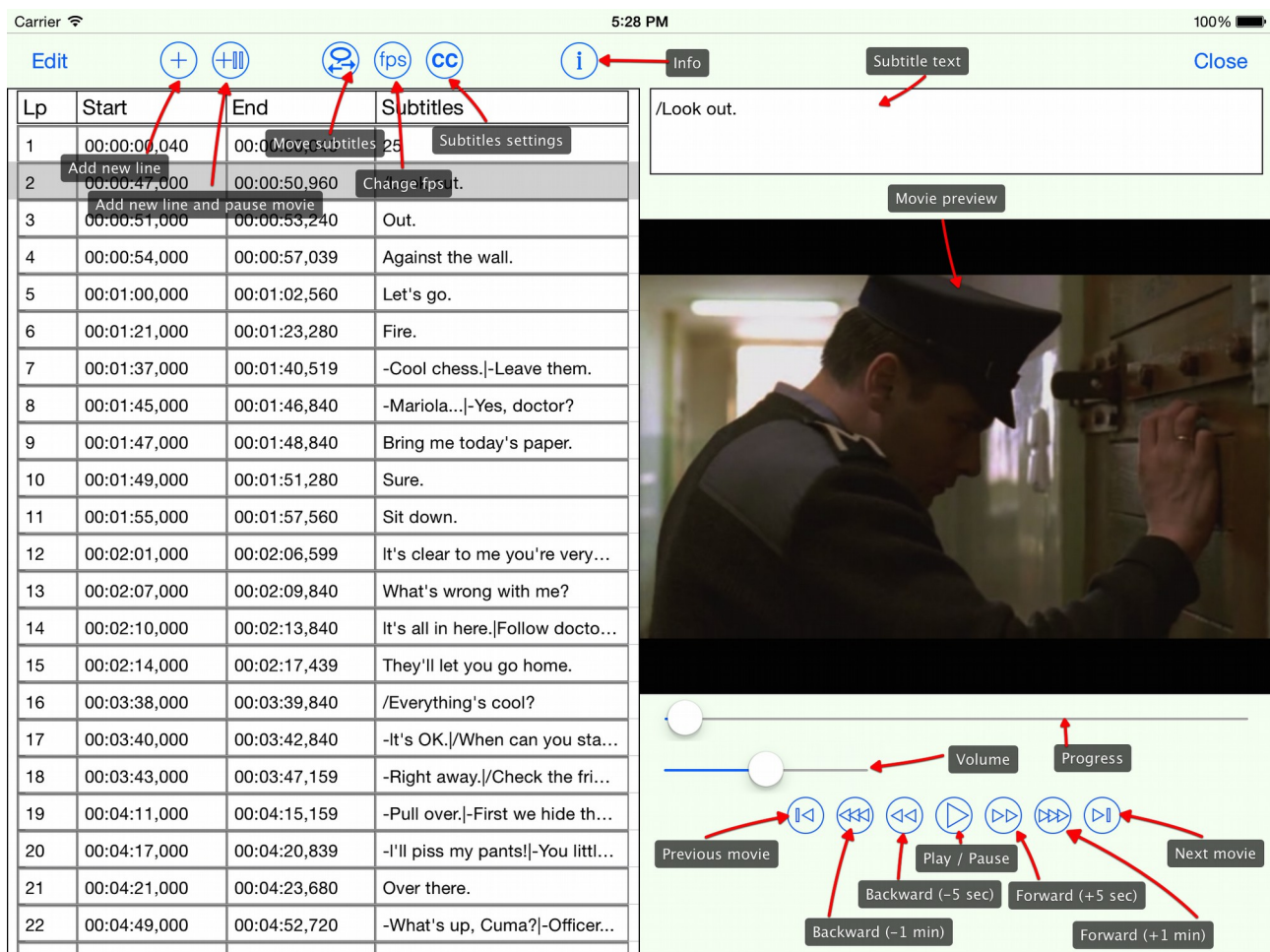
- top section which contains:
  - server / folder name and *Edit* and *Back* buttons
  - sort buttons and *Folders first* switch
- bottom section which contains buttons:
  - Downloads
  - Settings
  - Help



## 2.2 Subtitle editing window

Subtitle editing window allows you to edit subtitles file. This window contains:

- the list of subtitles
- larger field for subtitle text
- movie preview
- toolbar
- movie controls



Movie controls allows you to control playing movie and adjust video position and volume. This section includes seven buttons and two sliders:

- Play / Pause button
- Forward +5 seconds button
- Forward +1 minute button
- Backward -5 seconds button

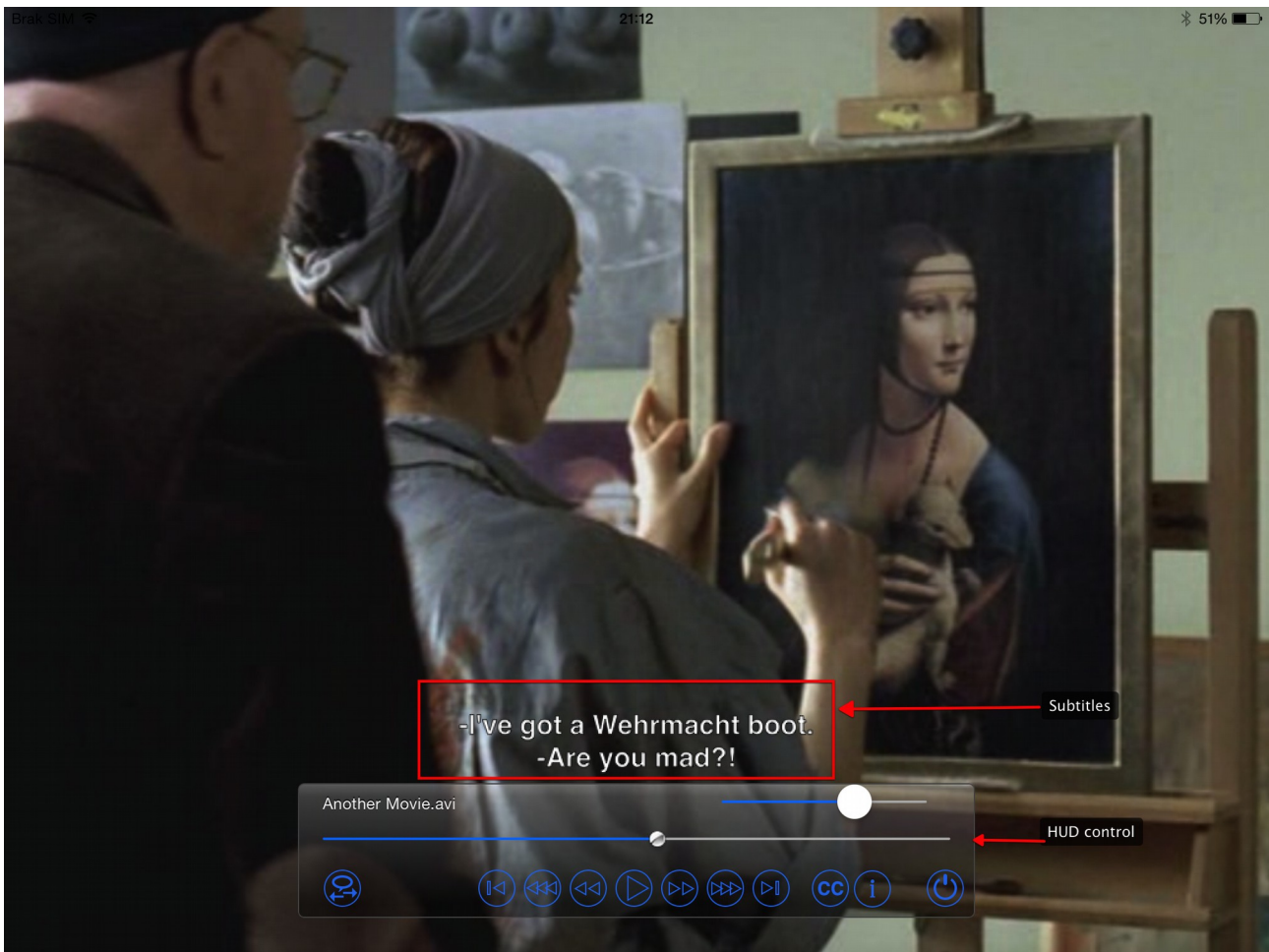
- Backward -1 minute button
- Volume slider
- Progress slider - shows current movie position and allows to change it

Toolbar contains buttons which allows to add and remove subtitles lines and also to change time parameters of all subtitles. Toolbar includes five buttons:

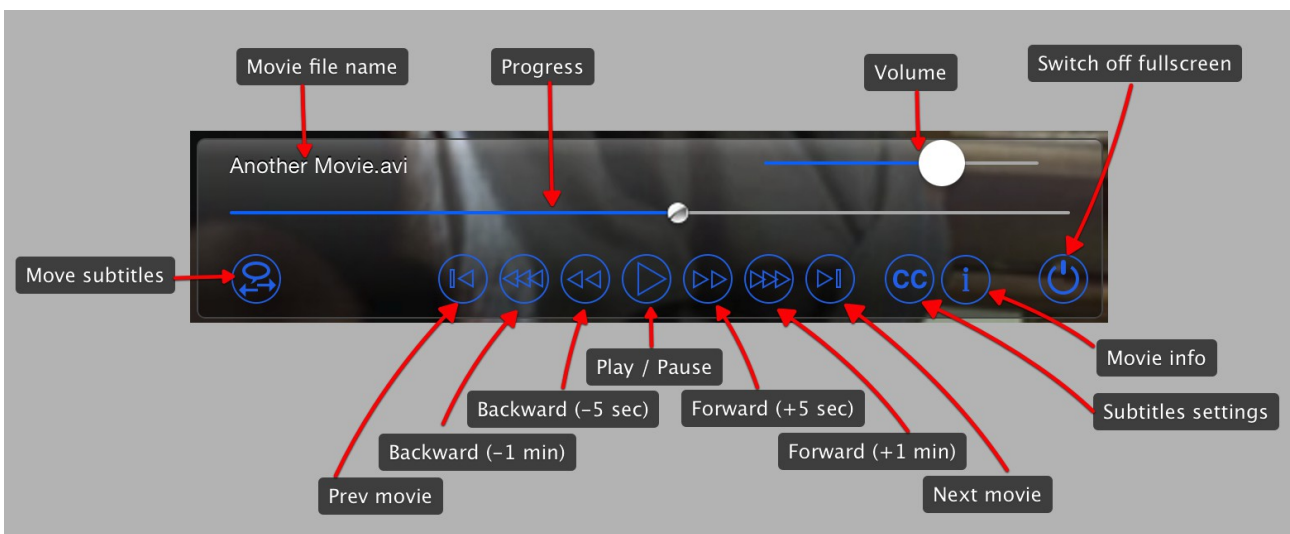
- Edit button – switches subtitles list in to edit mode
- Add new line button – add new subtitle line on current movie position with time length of one second.
- Add new line and pause movie button – add new subtitle line on current movie position with time length of one second, and pause movie (allows you to edit this line).
- Move subtitles – opens Change subtitles time window (see chapter xxx)
- Change fps – opens Change fps window (see chapter xxx), this button is enabled only when subtitles in mDVD format was loaded
- Subtitles settings -
- Movie info -
- Close button



## 2.3 Video fullscreen



### 2.3.1 HUD control



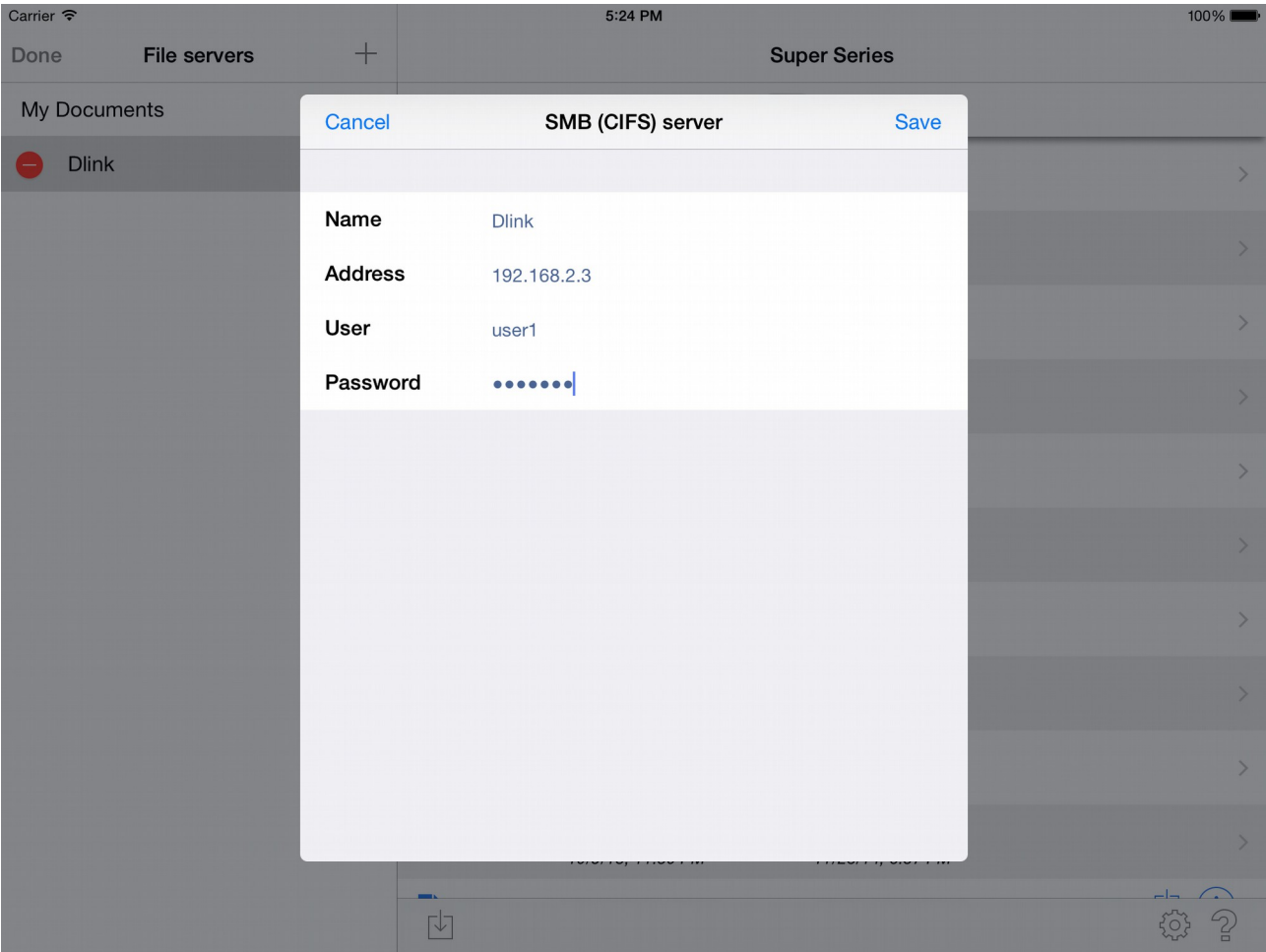


HUD control allows you to control playing movie, adjust video position and switch off fullscreen. This section includes eleven buttons and two sliders:

- Play / Pause button
- Forward +5 seconds button
- Forward +1 minute button
- Backward -5 seconds button
- Backward -1 minute button
- Exit video fullscreen button
- Move subtitles – opens *Change subtitles time* window (see chapter xxx)
- Subtitles settings
- Movie info
- Volume slider
- Progress slider - shows current movie position and allows to change it

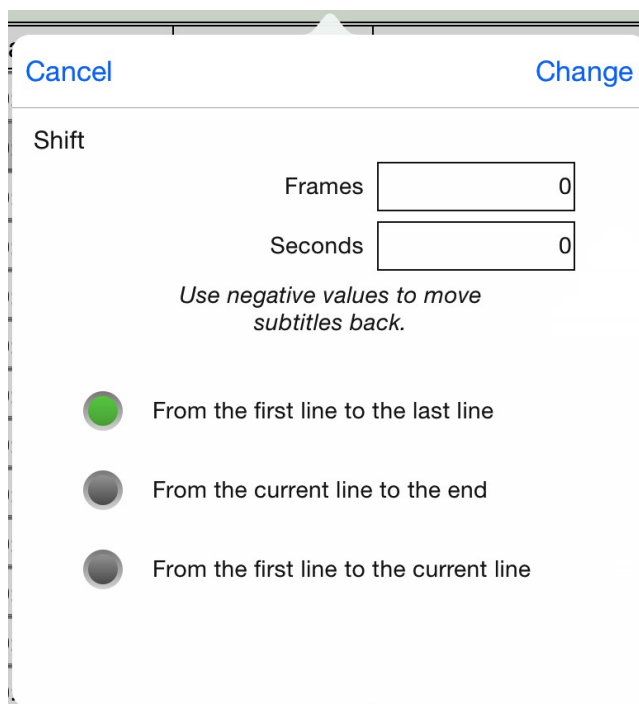
HUD control shows also name of subtitles file

2.4 Server window



## 2.5 Additional windows

### 2.5.1 Move subtitles



Cancel Change

Shift

Frames

Seconds

*Use negative values to move subtitles back.*

☒ From the first line to the last line

☐ From the current line to the end

☐ From the first line to the current line

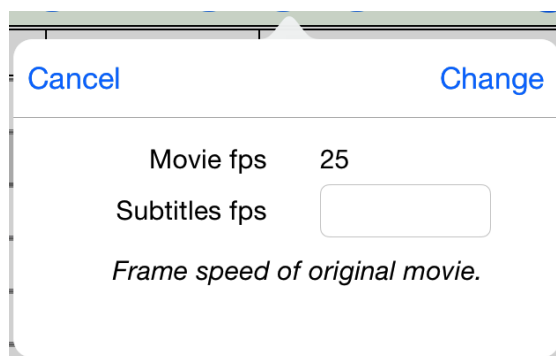
This window allows you to move all or part of the subtitles in the time. you can add or deduct a certain amount of time to beginning of every subtitle line.

The amount of time you can set in frames or seconds (both fields are connected and autocalculated using a fps from current movie). If you specify positive value, amount of time will be added to every line, negative value will deduct amount of time from every line.

There are three possible options of editing of subtitles:

- all lines in file
- lines from current line to end of file
- lines from beginning to current line.

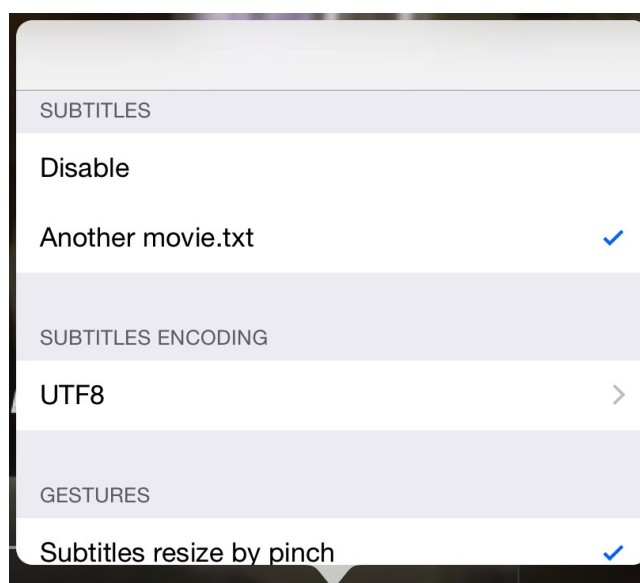
## 2.5.2 Change fps



This window allows you to change fps (frame-per-second rate) of the loaded subtitles. This function is available only when subtitles in mDVD format was loaded.

The window shows fps of current movie, and allows you to set frame rate of original movie (to which subtitles were designated).

## 2.5.3 Subtitles settings



Subtitles encodings

Current encoding

UTF8 >

Save encoding

UTF8 >

## ***2.6 Application Preferences***

## ***2.7 Application help***



### **3 Application usage**

This chapter shortly describes typical ways of applications usage.

#### ***3.1 Creating new subtitles for movie***

#### ***3.2 Adjusting existing subtitles for movie***

#### ***3.3 Movie watching***

## 4 Troubleshooting

Typical errors reported by Sub Edit HD.

Problem	Solution

## 5 Contact information

All informations about Sub Edit HD you can find on product webpage <http://subdithd.peritum.net>

If you would like send us comments, feature requests or report a bug, you can send email to [support@peritum.net](mailto:support@peritum.net), or use our Issue Tracker <http://tracker.peritum.net>.

You can also find us on Facebook: <http://facebook.com/Peritum.Net> and on Twitter @peritum.